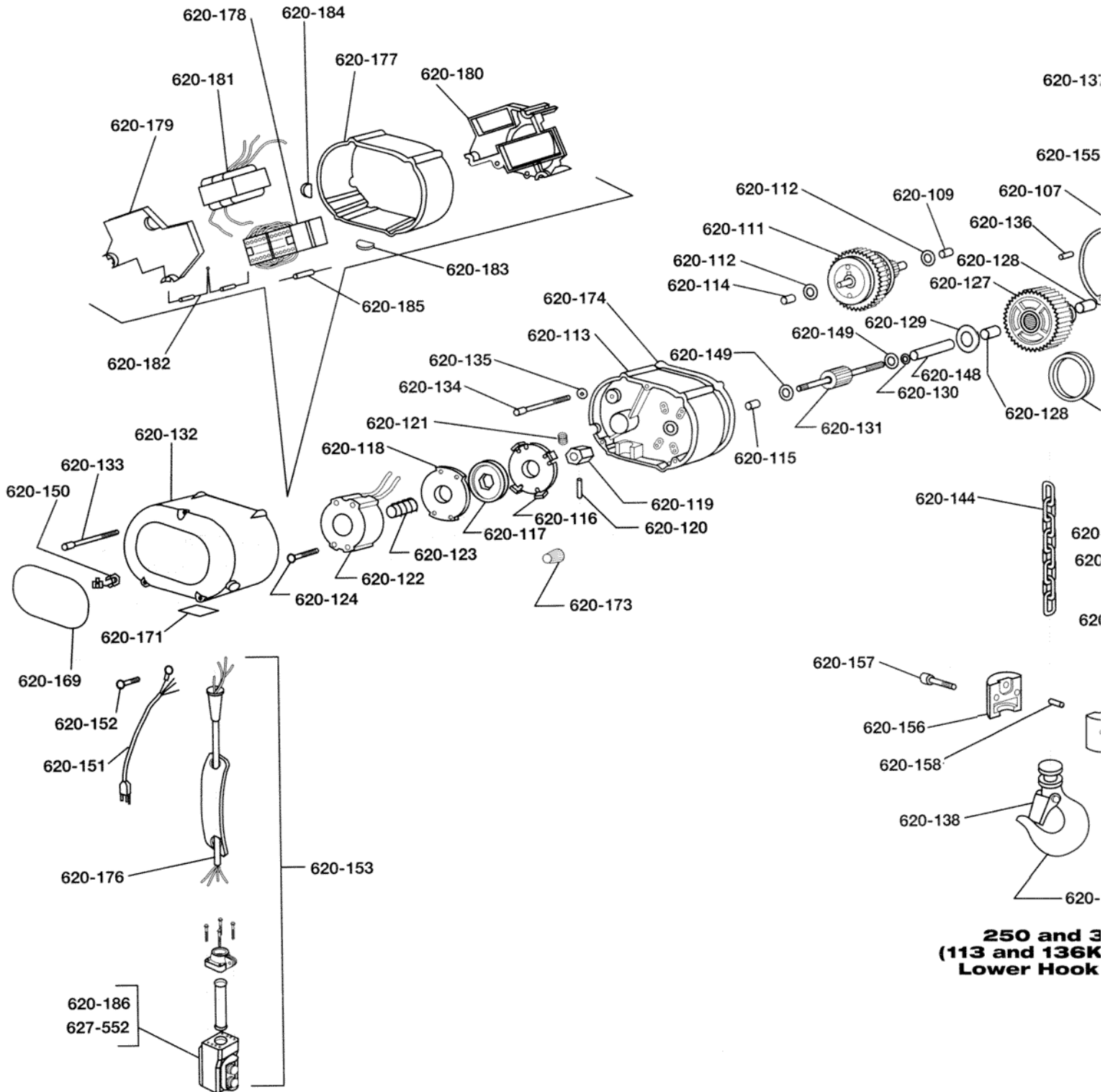
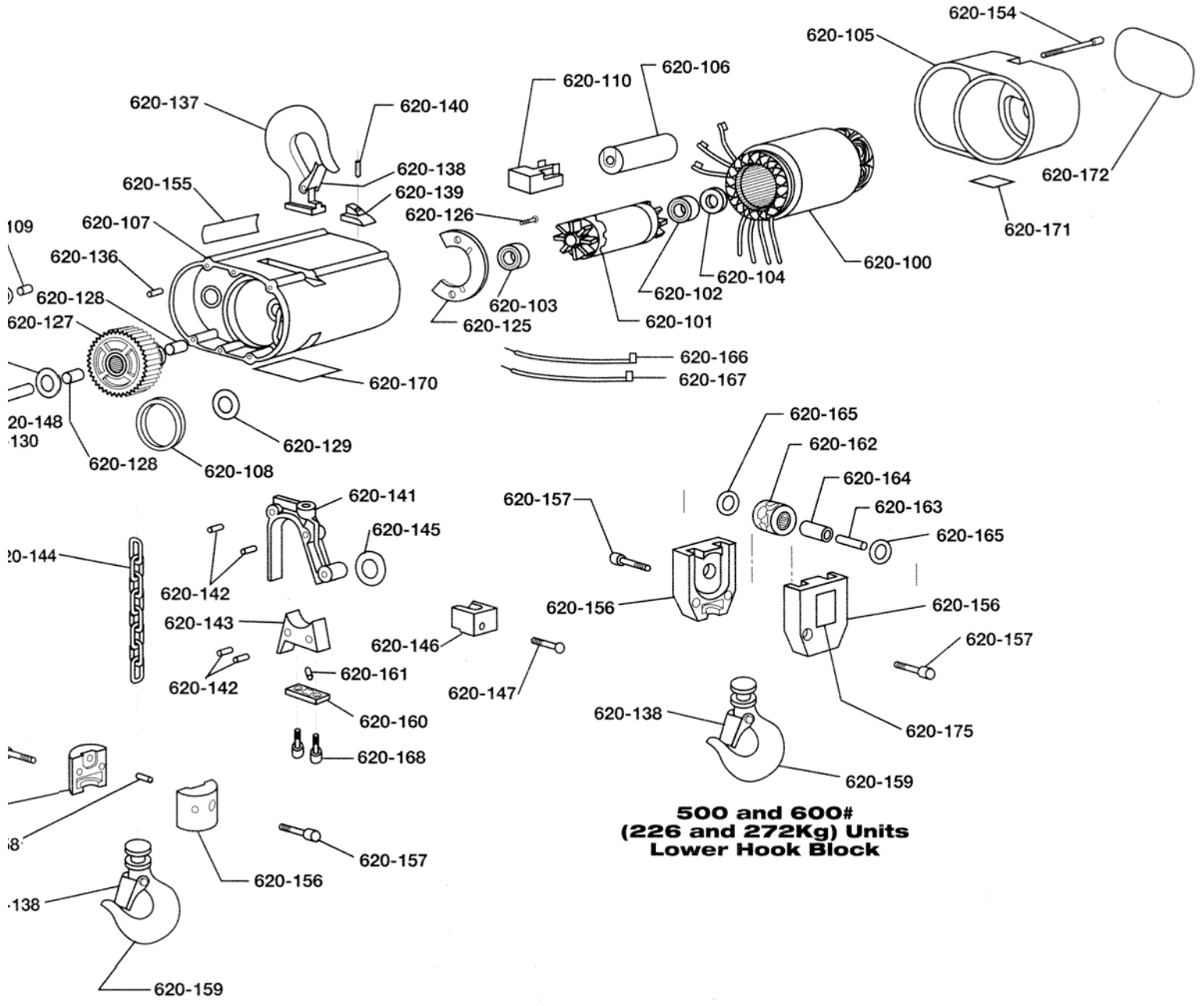


CM Shopstar Parts List





**250 and 300#
(113 and 136Kg) Units
Lower Hook Block**

**500 and 600#
(226 and 272Kg) Units
Lower Hook Block**

**Shopstar Electric
Chain Hoist
Exploded View**

KEY NUMBER	PART NAME	NO. REQ'D	PART NUMBER	
			250# UNIT 300# UNIT	500# UNIT 600# UNIT
620-100	STATOR: 115-1-50/60 HOISTS	1	20707	
	220-1-50/60 HOISTS	1	20328	
	220-3-50/60 HOISTS	1	20329	
	380-3-50,415-3-50 and 460-3-60 Hoists	1	20330	
620-101	ROTOR ASSEMBLY (INCLUDES 620-102 AND 620-103)	1	20651	
620-102	ROTOR BEARING, OUTBOARD	1	88487	
620-103	ROTOR BEARING, INBOARD	1	88486	
620-104	ROTOR THRUST WASHER	1	20727	
620-105	MOTOR END COVER	1	20302	
620-106	CAPACITOR: 115-1-50/60 Hoists	1	20708	
	220-1-50/60 Hoists	1	20785	
620-107	MAIN FRAME (INCLUDES 620-108 AND 620-109)	1	20300	
620-108	LIFTWHEEL SEAL	1	20705	
620-109	PROTECTOR BEARING - MAIN FRAME SIDE	1	88636	
620-110	CUT-OUT DEVICE: 115-1-50/60 Hoists	1	20709	
	220-1-50/60 Hoists	1	20786	
620-111	PROTECTOR ASSEMBLY	1	20606	
620-112	PROTECTOR THRUST WASHER	2	88640	
620-113	GEAR HOUSING (INCLUDES 620-114 AND 620-115)	1	20301	
620-114	PROTECTOR BEARING - GEAR HOUSING SIDE	1	88636	
620-115	FIRST PINION BEARING	1	88635	
620-116	BRAKE BASE PLATE	1	20735	
620-117	BRAKE DISC	1	20733	
620-118	BRAKE ARMATURE	1	20736	
620-119	BRAKE DRIVER	1	20732	
620-120	BRAKE DRIVER PIN	1	983766	
620-121	BRAKE DRIVER SPRING	1	20757	
620-122	BRAKE FIELD (INCLUDES BRAKE COIL): 115-1-50/60 Hoists	1	20613	
	220-1-50/60, 220-3-50/60, 380-3-50,415-3-50 and 460-3-60 Hoists.	1	20629	
620-123	BRAKE SPRING	1	20741	

620-124	BRAKE SCREW	4	920740
620-125	PIN RETAINER PLATE	1	20700
620-126	PIN RETAINER PLATE SCREW	2	20743
620-127	LIFTWHEEL AND GEAR ASSEMBLY (INCLUDES TWO, 620-128)	1	20605
620-128	LIFTWHEEL BEARING	2	88637
620-129	LIFTWHEEL THRUST WASHER	2	88638
620-130	LIFTWHEEL SHAFT SEAL	1	20704
620-131	FIRST PINION AND SHAFT	1	20306
620-132	BRAKE END COVER	1	20323
620-133	BRAKE END COVER SCREW: Hoists without contactor	3	920715
	Hoists with contactor	3	20808
620-134	GEAR HOUSING SCREW	4	920718
620-135	GEAR HOUSING SCREW SEAL (No longer used)	4	20701
620-136	FRAME PIN	2	920720
620-137	UPPER HOOK (INCLUDES 620-138)	1	20650
620-13B	HOOK LATCH KIT	2	595522
620-139	HOOK RETAINER	1	20712
620-140	HOOK RETAINER SCREW	1	920722
620-141	CHAIN GUIDE	1	20304
620-142	CHAIN GUIDE/STRIPPER PIN	4	20729
620-143	STRIPPER	1	20305
620-144	LOAD CHAIN - SPECIFY LIFT OR LENGTH REQ'D	-	85988
620-145	LOOSE END RING	1	20744
620-146	CHAIN STOP	1	20319
620-147	CHAIN STOP SCREW	1	25858
620-148	LIFTWHEEL SHAFT	1	20313
620-149	FIRST PINION THRUST WASHER	2	88639
620-150	POWER CORD GROMMET: Hoists without contactor	1	20717
	Hoists with contactor	1	20779
620-151	POWER CORD: 115-1 -50/60 Hoists with contactor	1	20635
	115-1-50/60 Hoists without contactor	1	20608
	220-1-50/60 Hoists	1	20633
	220-3-50/60, 380-3-50, 415-3-50 and 460-3-60 Hoists	1	20628

620-152	POWER CORD GROUND SCREW	1	982877	
620-153	CONTROL STATION AND CORD ASSEMBLY (includes control station, cord, warning Tag and upper grommet) Orange Control Station for: 10 ft. lift	1	20607	
	15 ft. lift	1	20615	
	20 ft. lift	1	20616	
	Black Control Station for 10 ft. lift	1	20625	
	15 ft. lift	1	20626	
	20 ft. lift	1	20627	
	For other lifts contact CM	-	-	
620-154	MOTOR COVER SCREW	3	920719	
620-155	CAUTION LABEL	1	20758	
620-156	HOOK BLOCK (for 500 and 600 Pound Units also order two hook block label key no. 620-175)	2	20742	20739
620-157	HOOK BLOCK SCREW	2	920723	920724
620-158	CHAIN PIN	1	920720	-
620-159	LOWER HOOK (INCLUDES 620-138)	1	23030	
620-160	DEAD END PLATE	1	-	20714
620-161	DEAD END PIN	1	-	920720
620-162	SHEAVE WHEEL (INCLUDES 620-164)	1	-	20652
620-163	SHEAVE WHEEL SHAFT	1	-	20316
620-164	SHEAVE WHEEL BEARING	1	-	88641
620-165	SHEAVE WHEEL THRUST WASHER	2	-	88639
620-166	JUMPER (#2)	1	20610	
620-167	JUMPER (CAP)	1	20609	
620-168	DEAD END PLATE SCREW	2	-	986185
620-169	CAPACITY/WARNING LABEL: 250# Hoist	1	20762	-
	300# Hoist	1	20737	-
	500# Hoist	1	-	20763
	600# Hoist	1	-	20738
620-170	I.D. LABEL: 250# 115-1-50/60 Hoist	1	20770	-
	300# 115-1-50/60 Hoist	1	20745	-
	500# 115-1-50/60 Hoist	1	-	20767
	600# 115-1-50/60 Hoist	1	-	20746
	250# 220-1-50/60 Hoist	1	20795	-
	300# 220-1-50/60 Hoist	1	20802	-
	500# 220-1-50/60 Hoist	1	-	20798

	600# 220-1-50/60 Hoist	1	-	20805
	250# 220-3-50/60 Hoist	1	20796	-
	300# 220-3-50/60 Hoist	1	20803	-
	500# 220-3-50/60 Hoist	1	-	20799
	600# 220-3-50/60 Hoist	1	-	20806
	250# 380-3-50, 415-3-50 and 460-3-60 Hoist	1	20797	-
	300# 380-3-50, 415-3-50 and 460-3-60 Hoist	1	20804	-
	500# 380-3-50, 415-3-50 and 460-3-60 Hoist	1	-	20801
	600# 380-3-50, 415-3-50 and 460-3-60 Hoist	1	-	20807
620-171	WARNING LABEL	2	248 42	
620-172	SHOPSTAR LABEL	1	20753	
620-173	WIRE NUT (Specify No. Req'd.)	-	920756	
620-174	GASKET	1	20755	
620-175	Hook Block Label: 500# Hoist	2	-	20768
	600# Hoist	2	-	20769
620-176	CONTROL CORD ASSEMBLY (includes cord, strain relief and warning tag) for Orange control station and: 10 ft. lift	1	20630	
	15 ft. lift	1	20631	
	20 ft. lift	1	20632	
	For black control station and : 10 ft. lift	1	51500	
	15 ft. lift	1	51501	
	20 ft. lift	1	51502	
	For other lifts, contact CM	-	-	
620-177	FRAME SPACER:	1	20333	
620-178	CONTACTOR (includes power jumpers); 115 VAC Coils	1	20814	
	48 VAC Coils	1	20787	
620-179	COMPONENTS BOARD-OUTBOARD	1	20777	
620-180	COMPONENTS BOARD-INBOARD	1	20778	
620-181	TRANSFORMER: 48 Volt Secondary	1	20788	
	115 Volt Secondary	1	20829	
620-182	DIODE ASSEMBLY	1	20789	
620-183	CONTROL CORD PLUG	1	20780	
620-184	POWER CORD PLUG	1	20781	
620-185	CONTACTOR JUMPER (Specify No. Req'd.)	-	20333	

**Part Number for Packaged Lubricants
Used in the Shopstar Electric Chain Hoists**

Lubricant Usage	Type Lubricant	Part Numbers and Packaged Quantity of Lubricants
Hoist Gears	Grease American Lubricants #1029	28605 for 1/2 lb. Can 28616 for 1 lb. Can 28617 for 4 lb. Can
Spline on end First Pinion and Shaft	Oil-Graphite Mixture Hercules Packing Co. Moly-Duolube 67	40628 for 1 Pint Can
Load Chain	Oil Fiske Bros. Lubriplate® Bar and Chain Oil #10R	28608 for 1 Pint Can 28619 for 1 Gal. Can
Lower Hook Knob	Grease Dow Corning Molykote BR-2-S	28606 for 1/2 lb. Can 28618 for 1 lb. Can

When ordering lubricants, specify the type of lubricant, part number and packaged quantity required.

Touch-up Paints for Shopstar Electric Chain Hoists:

Order *(1) case (12-12 oz. Aerosol Cans) of Orange Touch-up paint Part Number 84190.

*Touch-up paints are only available in case quantities.

NOTE: When painting Hoists, also order warning labels, etc. that may be coated during painting.